

## Section 1.2

## Air Terminal Mounting Hardware

### Masts for TerraStat<sup>®</sup>, TerraStreamer<sup>®</sup>, and Air Terminals

#### Stainless Steel Masts - 2" O.D. x 1.09" I.D. Tube

Part Number	Former P/N	Description	Weight
<b>MAST-SS-2-5-HD</b>	TSEM-2-5	Mast, Stainless Steel, 2 Inch, 5 Foot, For Terrastreamer <sup>®</sup> , Terrastat <sup>®</sup> , or Air Terminal, Heavy Duty	12.5 lbs (5.7 kg)
<b>MAST-SS-2-10-HD</b>	TSEM-2-10	Mast, Stainless Steel, 2 Inch, 10 Foot, For Terrastreamer <sup>®</sup> , Terrastat <sup>®</sup> , or Air Terminal, Heavy Duty	25.0 lbs (11.3 kg)
<b>MAST-SS-2-15-HD</b>	TSEM-2-15	Mast, Stainless Steel, 2 Inch, 15 Foot, For Terrastreamer <sup>®</sup> , Terrastat <sup>®</sup> , or Air Terminal, Heavy Duty	37.5 lbs (17.0 kg)
<b>MAST-SS-2-20-HD</b>	TSEM-2-20	Mast, Stainless Steel, 2 Inch, 20 Foot, For Terrastreamer <sup>®</sup> , Terrastat <sup>®</sup> , or Air Terminal, Heavy Duty	50.0 lbs (22.7 kg)

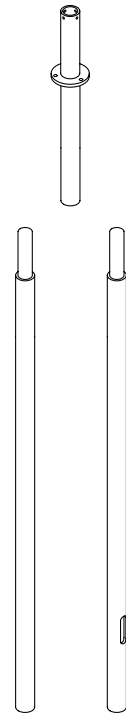
#### Stainless Steel Masts - 1.5" O.D. x 1.09" I.D. Tube

Part Number	Former P/N	Description	Weight
<b>MAST-SS-1.5-5-SD</b>	TSEM-1.5-5	Mast, Stainless Steel, 1.5 Inch, 5 Foot, For Terrastreamer <sup>®</sup> , Terrastat <sup>®</sup> , or Air Terminal, Standard Duty	11.0 lbs (5.0 kg)
<b>MAST-SS-1.5-10-SD</b>	TSEM-1.5-10	Mast, Stainless Steel, 1.5 Inch, 10 Foot, For Terrastreamer <sup>®</sup> , Terrastat <sup>®</sup> , or Air Terminal, Standard Duty	22.0 lbs (10.0 kg)
<b>MAST-SS-1.5-15-SD</b>	TSEM-1.5-15	Mast, Stainless Steel, 1.5 Inch, 15 Foot, For Terrastreamer <sup>®</sup> , Terrastat <sup>®</sup> , or Air Terminal, Standard Duty	33.0 lbs (15.0 kg)
<b>MAST-SS-1.5-20-SD</b>	TSEM-1.5-20	Mast, Stainless Steel, 1.5 Inch, 20 Foot, For Terrastreamer <sup>®</sup> , Terrastat <sup>®</sup> , or Air Terminal, Standard Duty	44.0 lbs (20.0 kg)



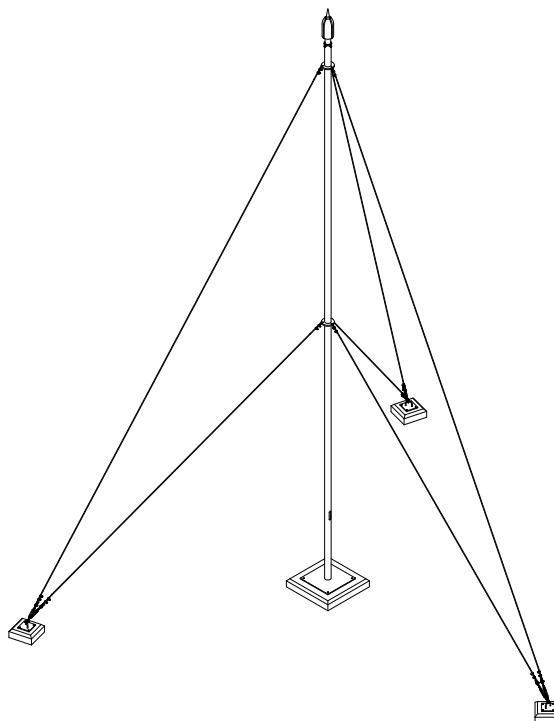
## FRP Masts

Part Number	Former P/N	Description	Weight
<b>MAST-FRP-3-2-GUY</b>	TSE-FRP-A	Mast, FRP, 3 ft length, 2 in Diameter, With Guy Ring	3.5 lbs (1.6 kg)
<b>MAST-FRP-7-2</b>	TSE-FRP-B	Mast, FRP, 7 ft length, 2 in Diameter	8.0 lbs (3.6 kg)
<b>MAST-FRP-7-2-TH</b>	TSE-FRP-C	Mast, FRP, 7 ft length, 2 in Diameter with Conductor Slot	8.0 lbs (3.6 kg)



## FRP Guy Wire Mast Kits

Part Number	Former P/N	Description	Weight
<b>MAST-FRP-GUY-KIT-10</b>	TSE-GUY-KIT-10	FRP-10 ft Mast With ,45' of 3/16 CABLE, 3 Turnbuckles, 3 D Clamps, 12 U Clamps, 6 AF Sleeves, 3 Anchor Plates	22.8 lbs (10.3 kg)
<b>MAST-FRP-GUY-KIT-17</b>	TSE-GUY-KIT-15	FRP-17 ft Mast With, 60' of 3/16 Cable, 3 Turnbuckles, 3 D Clamps, 12 U Clamps, 6 AF Sleeves, 3 Anchor Plates	30.2 lbs (13.7 kg)
<b>MAST-FRP-GUY-KIT-24</b>	TSE-GUY-KIT-20	FRP-24 ft Mast With, 75' of 3/16 CABLE, 3 Turnbuckles, 3 D Clamps, 12 U Clamps, 6 AF Sleeves, 3 Anchor Plates	37.5 lbs (17.0 kg)
<b>MAST-FRP-GUY-KIT-31</b>	TSE-GUY-KIT-30	FRP-31 ft Mast With,150' of 3/16 Cable, 6 Turnbuckles, 6 D Clamps, 24 U Clamps, 12 AF Sleeves, 3 Anchor Plates	63.0 lbs (28.6 kg)

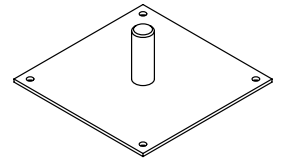


## Section 1.2

## Mount Bases

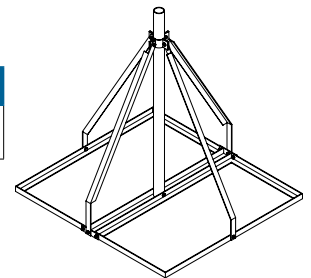
## Aluminum Mast Base

Part Number	Former P/N	Description	Weight
<b>FRP-12-8-BASE</b>	TSE-FRP-BASE	Base, Aluminum 12" by 12", 1-1/2" X 8" Mast Stud With (4) 1/2" Mounting Bolts, For Use With Guy Wires ONLY	4.25 lbs (1.93 kg)



## Non Penetrating Ballast Mount Base

Part Number	Former P/N	Description	Weight
<b>BS-GS-36-48-NP</b>	TSE-NP-BASE	Base-Galvanized Steel, 36"L, 36"W, 48"H, Non Penetrating	30.0 lbs (13.6 kg)



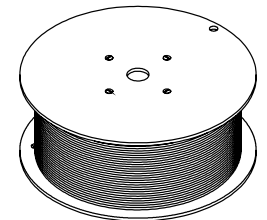
## NOTE

- This base requires eight cement blocks or equivalent to weight down the base.

## FRP Guy Wire Kit Accessories and Hardware

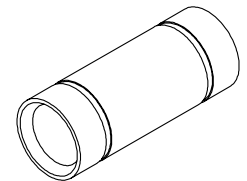
## Guy Wire Cable

Part Number	Former P/N	Description	Weight
<b>CBL-SS-3/16-GUY</b>	TSE-GUY-CABLE	Cable, Stainless Steel, 3 1/6, Guy Wire	5.5 oz (160.0 g) (per ft.)



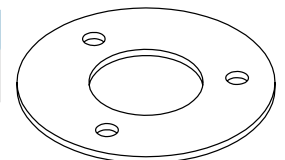
## Anti Fray Sleeve

Part Number	Former P/N	Description	Weight
<b>SLV-GUY-CBL</b>	TSE-AF-SLEEVE	Sleeve, Guy Cable, Anti-Fray	2 oz (5.67 g)



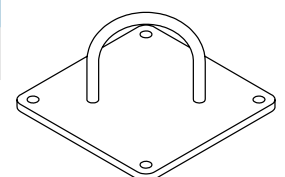
## Guy Wire Ring

Part Number	Former P/N	Description	Weight
<b>RNG-4-3GUY-FRP</b>	TSE-FRP-ANC-G	Ring, 4", 3 Guy Wire, for FRP Masts	8.8 oz (0.25 kg)



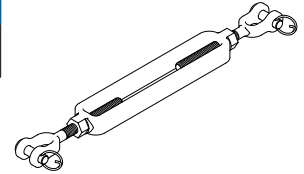
## GI Anchor Plate

Part Number	Former P/N	Description	Weight
<b>PLT-SS-3-GUY-ANC-FRP</b>	TSE-GI-ANC-P	Plate, Stainless Steel, 3" by 3", Guy Anchor, for FRP Masts	22 oz (0.62 kg)



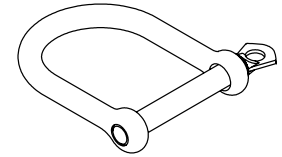
### Turnbuckle Clamp

Part Number	Former P/N	Description	Weight
<b>GUY-SS-CL-TB</b>	TSE-GUY-TB-CLAMP	Clamp, Stainless Steel, 4" Turn Buckle, for FRP Masts	3.5 oz (100 g)



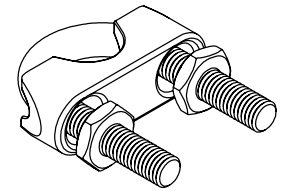
### "D" Clamp

Part Number	Former P/N	Description	Weight
<b>GUY-SS-CL-D</b>	TSE-GUY-D-CLAMP	Clamp, Stainless Steel, D Type, for FRP Masts	1.4 oz (40 g)



### "U" Clamp

Part Number	Former P/N	Description	Weight
<b>GUY-SS-CL-U</b>	TSE-GUY-U-CLAMP	Clamp, Stainless Steel, U Type, for FRP Masts	0.7 oz (20 g)



### Adhesive

Part Number	Former P/N	Description	Weight
<b>ADH-FRP</b>	TSE-FRP-RESIN	Adhesive, 2 Part, for use on FRP Masts	17.6 oz (500 g)



#### NOTE

- Refer to [Section 2 "Heavy Duty Mounting Brackets"](#) for further information on our bracket systems.